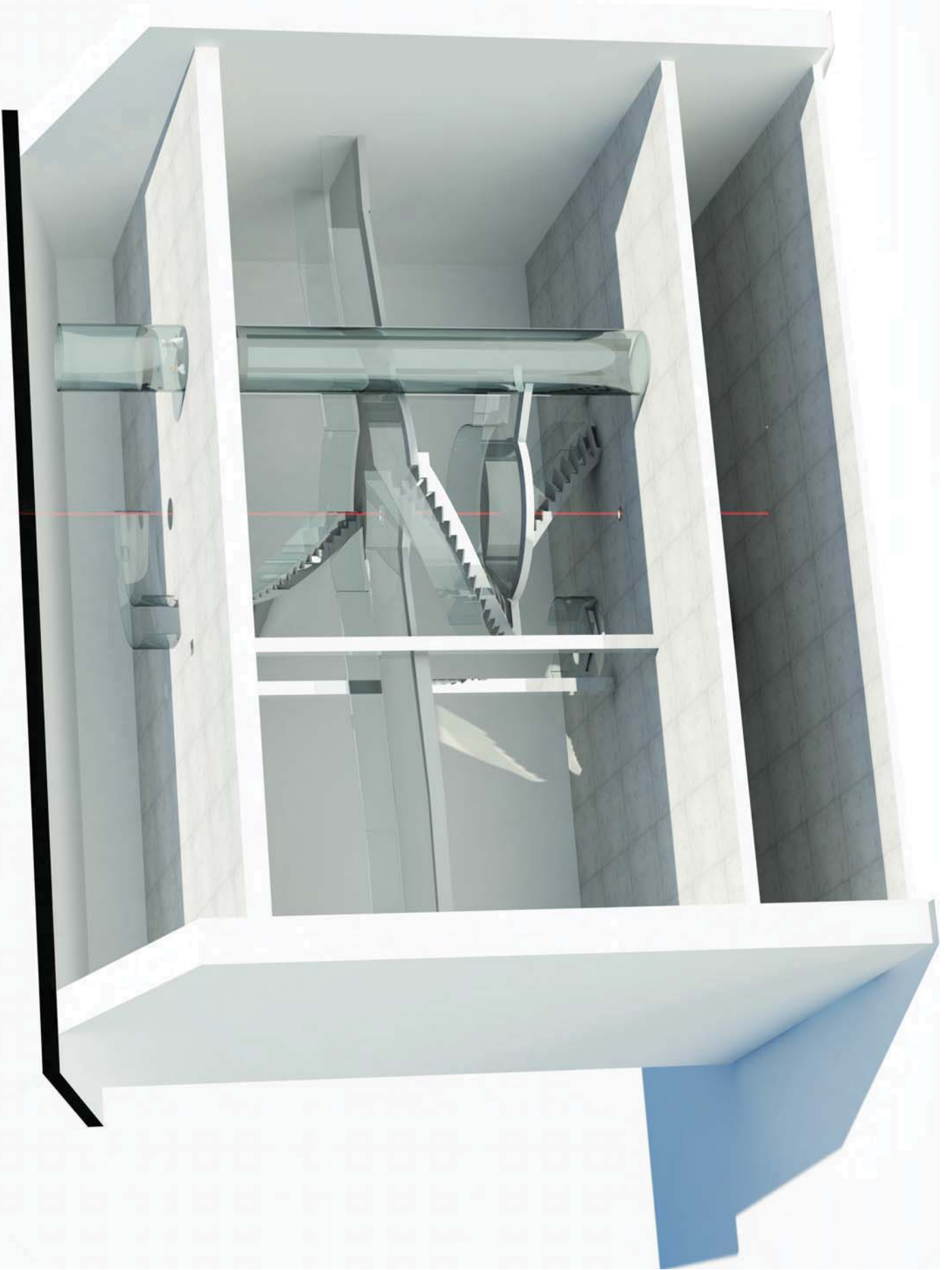


HHole (for Mannheim 2006 - ∞) v. 2015





HHole (for Mannheim 2006 - ∞) v. 2015

www.HHole.net by NatHalie Braun Barends

PHaradise

Infinity Room

Phoenix Room

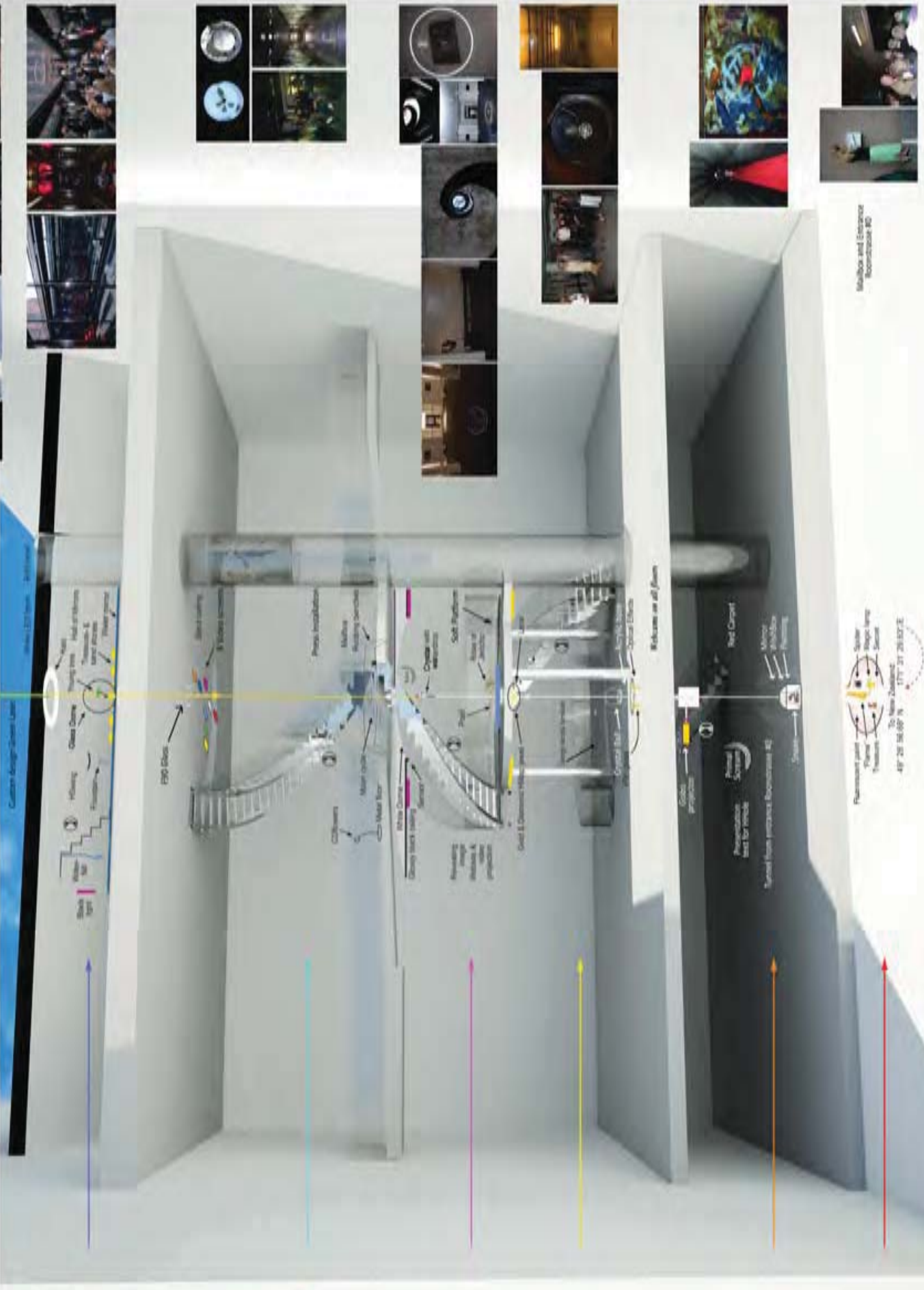
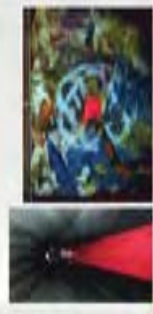
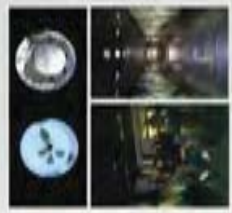
Reflection Room

Silence Room

Treasure Room

Ground Room

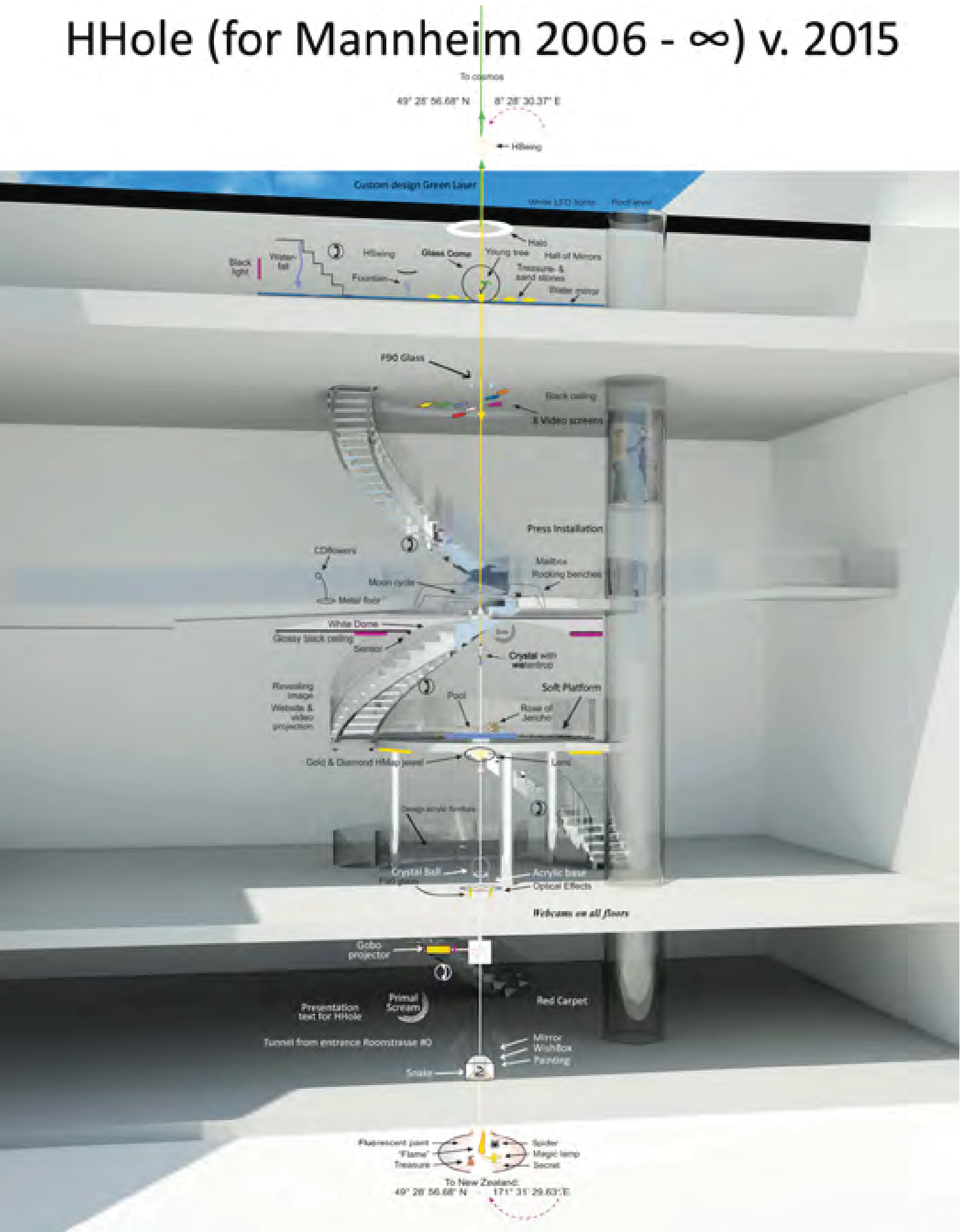
Earth Room



Planned until
"Phase"
Timeline
49° 28' 58.87" N
8° 28' 36.37" E
To New Zealand
1771 21 28.87 E

Mailbox and Entrance
Room 80

HHole (for Mannheim 2006 - ∞) v. 2015



Highlights



Foto: Thomas Heine

HHole (for Mannheim), 2006 – ∞, © NatHalie Braun Barends/At al H. B. Baum
www.hhole.org

Für die freundliche Unterstützung des Projekts danken wir

BASF Aktiengesellschaft, Ludwigshafen
ColorGlock, Leimen
DG Medien Service, Heidelberg
Eckardt Objekt Form & Funktion, Siegen

Art World Drivers
Schmucker und Partner Planungsgesellschaft mbH, Mannheim
Die Lichtplaner, Limburg
Reck & Schack GmbH & Co., Mannheim

Kunsthalle Mannheim

STADTMANNHEIM